

RAYMORE

R. 18

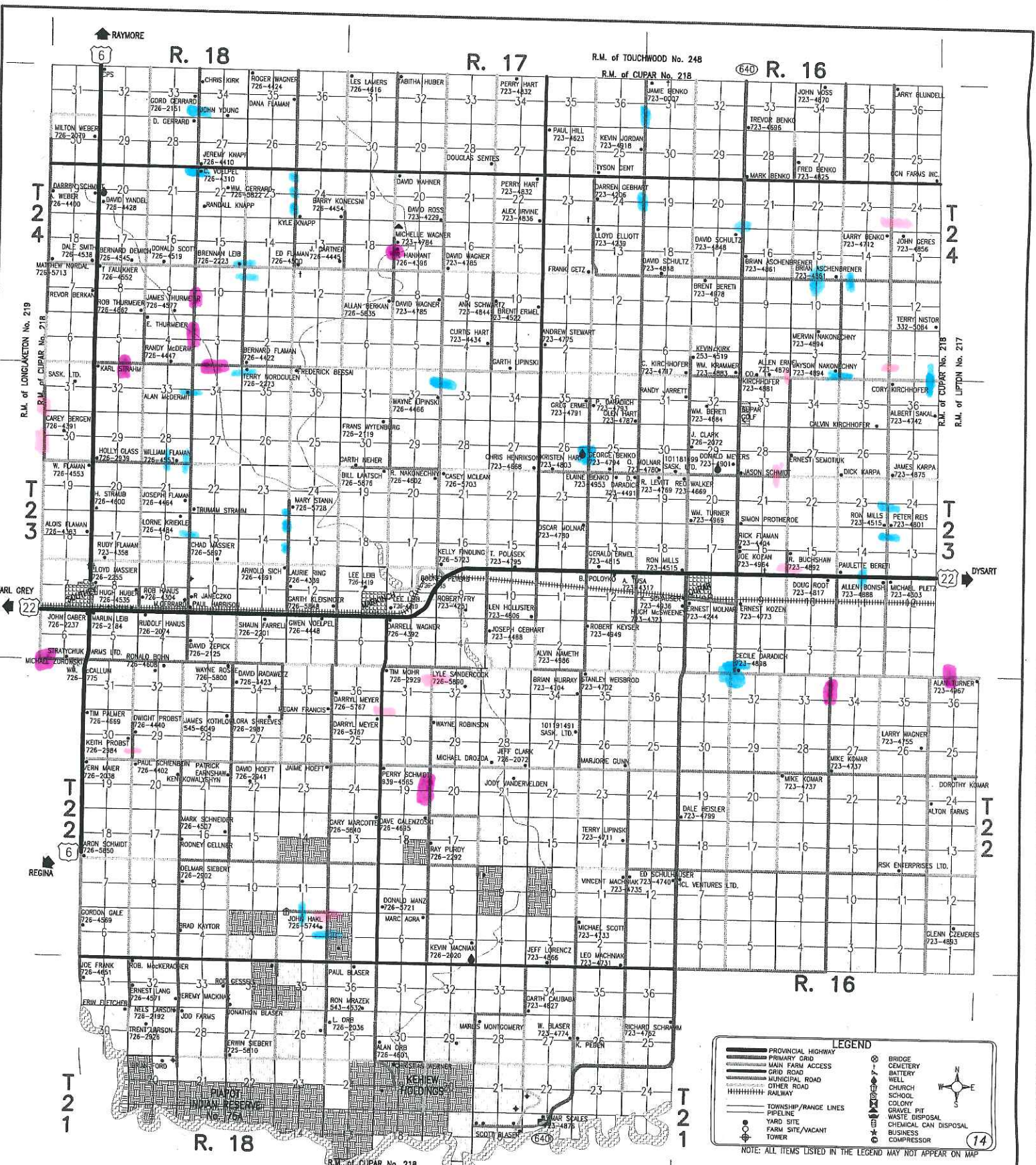
R. 17

R.M. of TOUCHWOOD No. 248

R. 16

6

640



R.M. of LONGMEADON No. 219

R.M. of CUPAR No. 218

R.M. of CUPAR No. 218

R.M. of CUPAR No. 218

R.M. of CUPAR No. 218

R.M. of CUPAR No. 218

R.M. of CUPAR No. 218

R.M. of CUPAR No. 218

R.M. of CUPAR No. 218

R.M. of EDENWOLD No. 158

R. 17

R. 16

R. 18

R.M. of Cupar No. 218

LEGEND

- PROVINCIAL HIGHWAY
- PRIMARY GRID
- MAIN FARM ACCESS
- GRID ROAD
- MUNICIPAL ROAD
- OTHER ROAD
- RAILWAY
- TOWNSHIP/RANGE LINES
- PIPELINE
- YARD SITE
- FARM SITE/VACANT
- TOWER
- BRIDGE
- CEMETERY
- BATTERY
- WELL
- CHURCH
- SCHOOL
- CLONY
- GRAVEL PIT
- WASTE DISPOSAL
- CHEMICAL CAN DISPOSAL
- BUSINESS COMPRESSOR

NOTE: ALL ITEMS LISTED IN THE LEGEND MAY NOT APPEAR ON MAP

THIS RM WAS DRAFTED USING THE MOST CURRENT MAP AVAILABLE FROM THE MUNICIPALITY (2014). SOME CHANGES MAY HAVE BEEN FOUND AND CORRECTED BY OUR OWN RESEARCH.

